

FLUID HANDLING:

TC Series Filter Cart

This heavy-duty, high capacity portable system is capable of removing particles and/or free water from industrial oils and can be configured to meet the needs of almost any specific application.



EUROPE

The Overview

The TC Filter Cart:

Where It's Used

- Decontaminating systems
- Flushing new or repaired systems
- Dispensing oil
- Pre-filtering new oil
- Evacuating used oil
- Topping off reservoirs
- Flushing systems
- Collecting oil samples for analysis

What Is Standard?

- Automatic pump pressure relief
- Dual-stage filtration
- Pump inlet strainer
- Pre and post filter sample ports
- Manual bypass
- Heavy-duty cart with oil catch pan
- Industrial powder-coated paint
- One-year warranty

What Can I Customize?

- Color
- Micron ratio of filters
- Power configurations

Technical Data:

Pump Type:

- Gear Pump

Electric motor:

- 2,2 kW 230v 50 Hz 1400 rpms
- 2,2 kW 3x230v 50 Hz 1400 rpms
- 2,2 kW 3x400v 50 Hz 1400 rpms

Permissible flow rate:

- 70 lpm maximum

Operating pressure:

- 6 bar maximum

Viscosity range:

- 10-460 cSt (60 - 2270 SSU)

Permissible operating fluid:

- Mineral oil (others on request)

Permitted fluid temperature range:

- -10°C to 60°C

Permitted Ambient temperature:

- -10°C to 40°C

Seals:

- NBR

Suction Strainer:

- 250µm

Protection class:

- IP 54

Length of power cable:

- 5 meters

Length of hoses:

- 5 meters

Hose connections:

- Suction hose 1-1/4" camlock
- Pressure hose 1-1/4" camlock

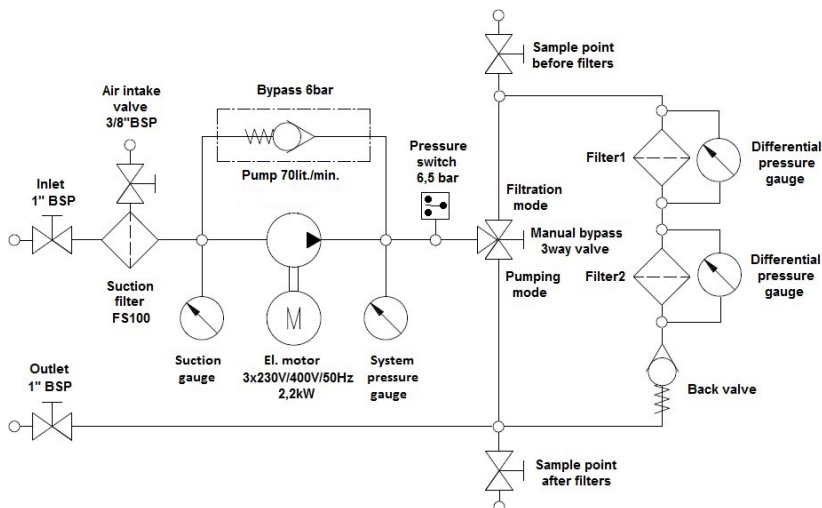
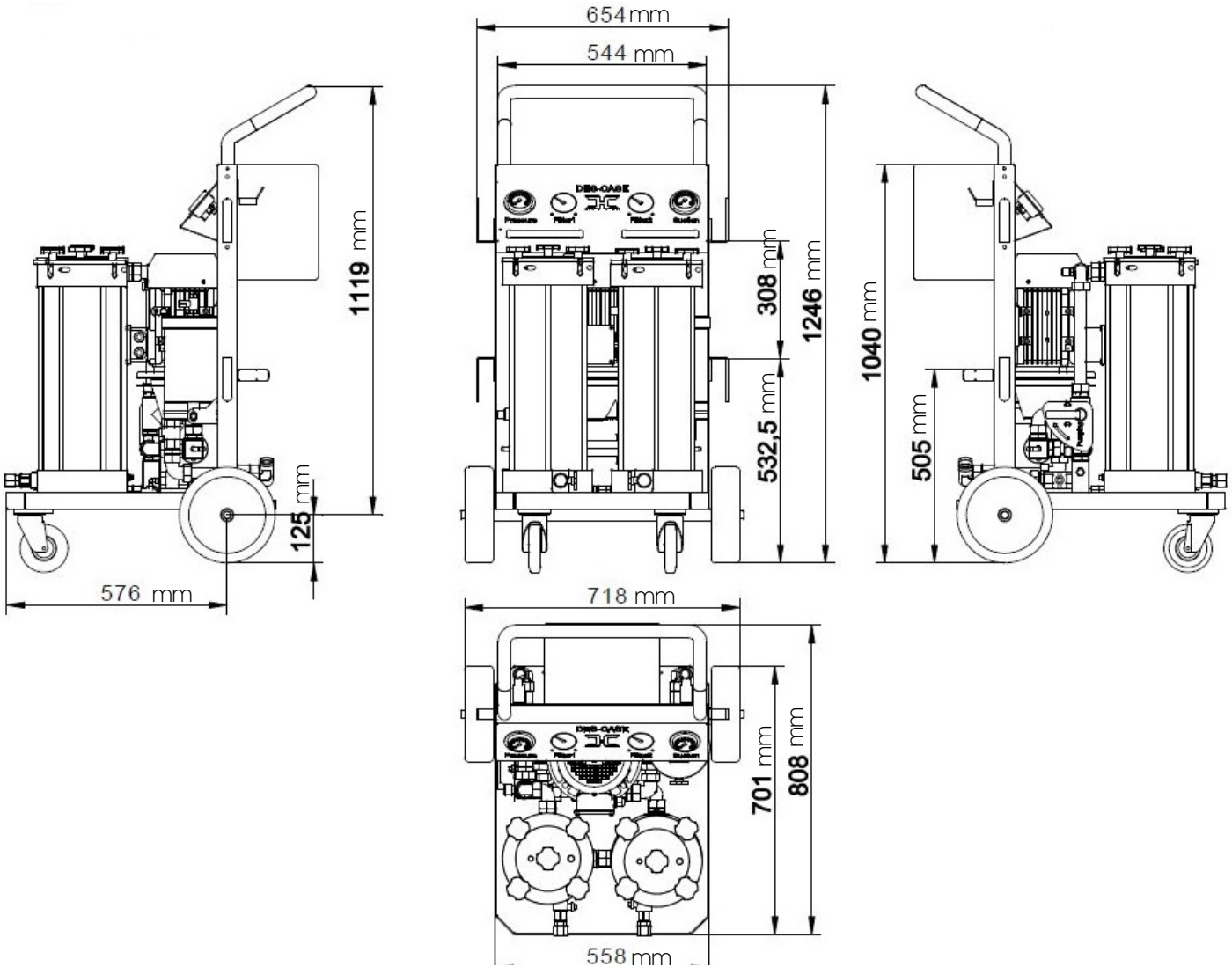
Weight when empty:

- ≈ 170 kg

Equipment:

- Suction Gauge - Visual
- Pressure Gauge - Visual
- Differential Pressure Gauge - Visual
- Pressure Switch (6,5 bar) - Electrical

The Features



EUROPE

Model Code

TC Series Filter Cart

ETC										
	Box 1	Box 2	Box 3	Box 4	Box 5	Box 6	Box 7	Box 8	Box 9	Box 10

Pump/Motor Combinations [Box 1]

Code	Description
70H	70 lpm/2,2 kW, 230 V, 50 Hz, 1400 rpms
70M	70 lpm/ 2,2 kW, 3x230V, 50 Hz, 1400 rpms
70K	70 lpm/ 2,2 kW, 3x400V, 50 Hz, 1400 rpms

Drain & Fill Connector Type [Box 2]

Code	Description
C	Camlock

Drain & Fill Sizing [Box 3]

6	Drain: 1" hose & 1-1/4" connection Fill: 1" hose & 1-1/4" connection
---	---

Filter A [Box 4]/Filter B [Box 5]

Code	Description
2A	3-micron Particulate Filter
2B	6-micron Particulate Filter
2C	12-micron Particulate Filter
2D	25-micron Particulate Filter
2J	Water Filter

Manual Filter Bypass [Box 6]

Code	Description
B	Filter Bypass

Sample Valves [Box 7]

Code	Description
2	Standard Minimes

Cord [Box 8]

Code	Description
C	5 m cord

Strainer [Box 9]

Code	Description
S	Strainer

Custom Colors [Box 10]

Code	Description
1	Brushed Aluminum
2	Black
3	White
4	Blue
5	Red
6	Yellow

Replace Your Elements

Part No.	Micron Rating
E04-618-3UM	Beta 200 @ 3µm
E04-618-6UM	Beta 200 @ 6µm
E04-618-12UM	Beta 200 @ 12µm
E04-618-25UM	Beta 200 @ 25µm
E04-618-WR	Water Removal